

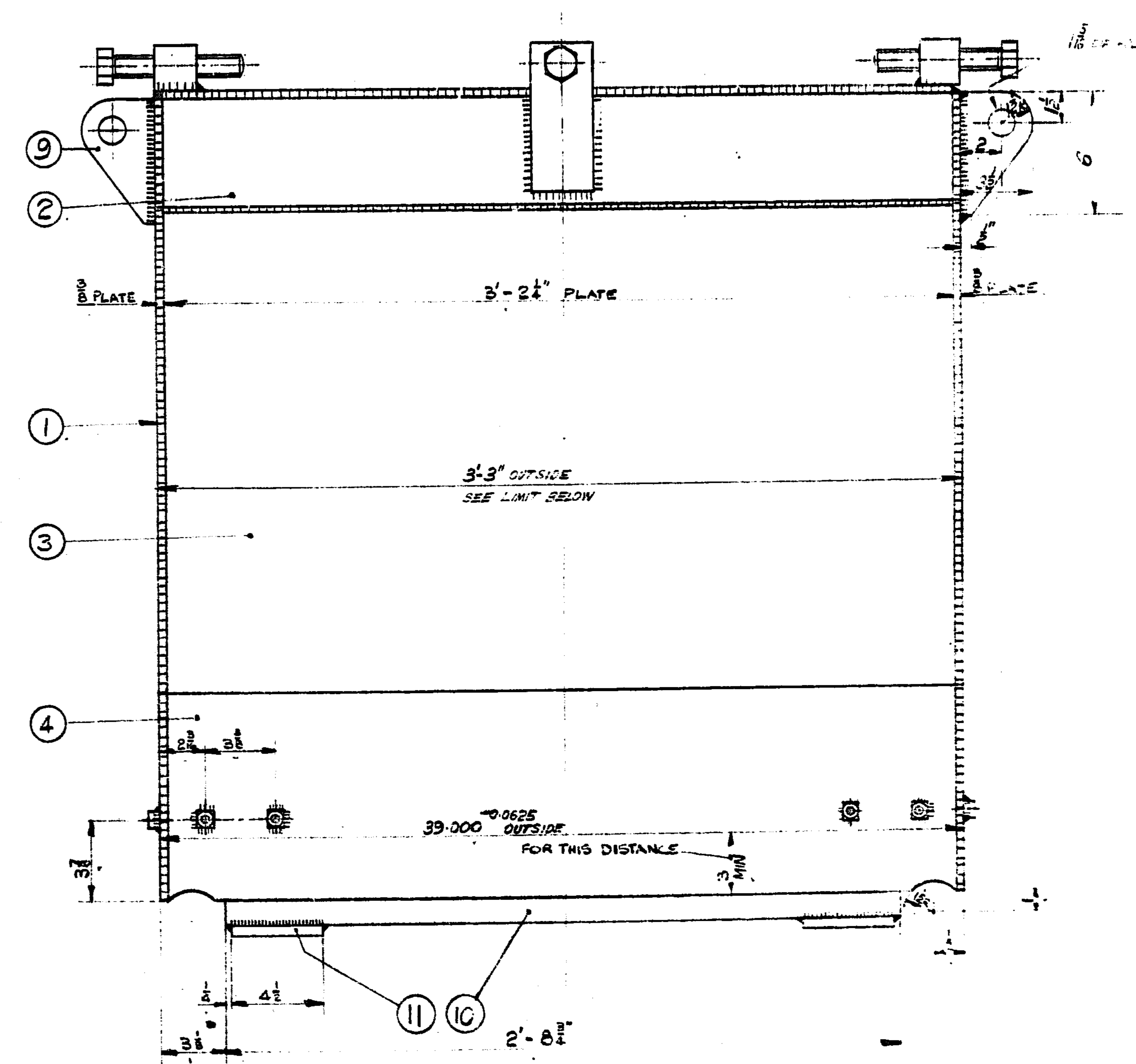
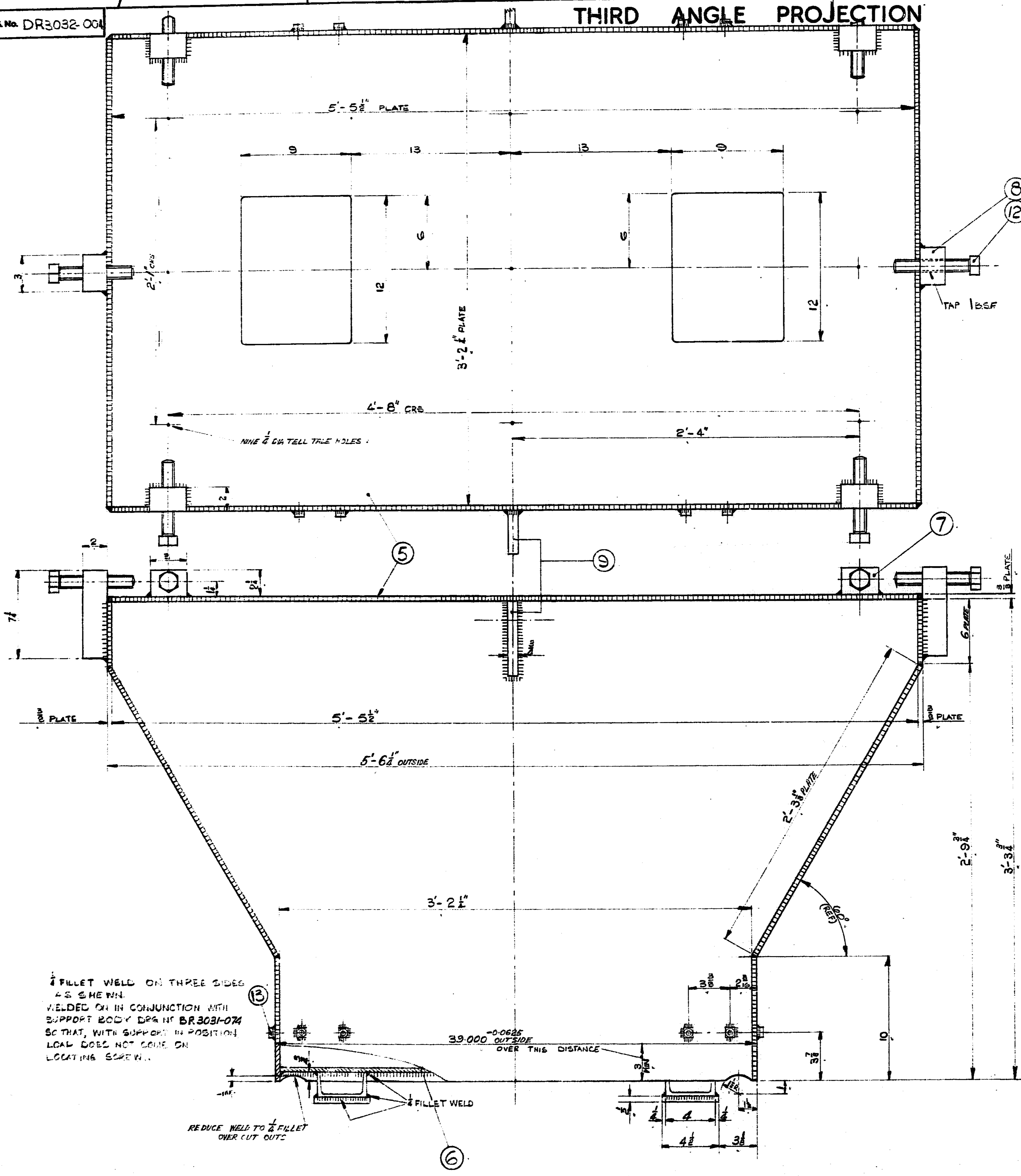
USED ON
DRAWING
PART LIST
No.
DR 3032-004

DRG. No. DR3032-004

THIRD ANGLE PROJECTION

- NOTES:
1. EDGES OF PLATES MAY BE FLAME-CUT OR SHEARED AS REQUIRED.
 2. ALL WELDS $\frac{1}{8}$ " FILLET UNLESS STATED.
 3. STAND TO BE FILLED WITH A 4-2-1 CONCRETE MIXTURE, THOROUGHLY CONSOLIDATED, PARTICULARLY UNDER TOP PLATE. FINISH AT 12" HOLE FLUSH WITH OUTSIDE OF PLATE.
 4. AFTER COMPLETION, THE WHOLE ASSEMBLY TO BE PAINTED WITH ONE PRIMER COAT AND ONE FINISHING COAT OF NO. 166 FRENCH BLUE TO B.S. 381C 1943.

ITEM	QTY	DRG. NO.	NAME	NO. OFF. ASSEMBLY	REMARKS
1	THIS		SIDE		PLATE 18" x 18"
2	THIS		END UPPER		PLATE 18" x 18"
3	THIS		END MIDDLE		PLATE 18" x 18"
4	THIS		END LOWER		PLATE 18" x 18"
5	THIS		TOP		PLATE 18" x 18"
6	THIS		BOTTOM		PLATE 18" x 18"
7	THIS		POST		PLATE 18" x 18"
8	THIS		POST		PLATE 18" x 18"
9	THIS		LIFTING LUG		PLATE 18" x 18"
10	THIS		CHANNEL		PLATE 18" x 18"
11	THIS		FLAT		PLATE 18" x 18"
12	THIS		ADJUSTING SCREW		18" x 18" x 18"
13	THIS		NUT		18" x 18" x 18"



$\frac{1}{4}$ " FILLET WELD ON THREE SIDES AS SHOWN. WELDED ON IN CONJUNCTION WITH SUPPORT BODY DRG. NO. BR3031-074 SO THAT, WITH SUPPORT IN POSITION LOCAL DOES NOT COME ON LOCATING SCREWS.

REDUCE WELD TO $\frac{1}{8}$ " FILLET OVER CUT OUT

DESIGN SPEC.

ISSUE	DATE	MOD. NO.
1	12-5-55	-

SCALE
3/16" = 1 FT.
(1/2)

MATL - SEE PARTS LIST
SPECN. BLK. MS. TO BS 15 GRADE 1.
FINISH - SEE NOTE 4

TOLERANCES - UNTOC. DIMS $\pm \frac{1}{16}$.
DIMS. IN INCHES UNLESS STATED

DWN - L. N. DUTTON
TRCD -
CHKD - J. M. LEESE
APPD -

A. E. R. E. HARWELL
TITLE
TYPE 1 BENDING MAGNET STAND-BASE

DRAWING No.
DR 3032-004

0 SHEET